



A foundation for transforming your business with agentic AI

Fabián Bonilla
Region Technical Manager
fbonilla@genexus.com



A unique moment in the world of technology **where two AI revolutions are taking place at the same time**

Individuals need to
create their own AI
agents



Companies need to
automate complex
processes

Globant Enterprise AI brings together both in a secure, scalable and extensible platform.

Two revolutions, one platform:

Globant ►
Enterprise AI

New Possibilities, New Challenges

**PROVIDER
DEPENDENCE.**

**LACK OF
GOVERNANCE.**

POC TRAP.

LIMITED ADOPTION.

Globant ► Enterprise AI

The platform for reliable and scalable AI



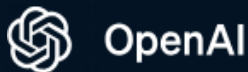
We created ^{Globant} Enterprise AI to offer:

Flexibility to explore different models:

Switch and combine **+100 LLMs**



ANTHROPIC



Gemini

groq



∞ Meta





We created ^{Globant▶} Enterprise AI to offer:

Enhanced security:

- Centralized governance for GenAI adoption.
- Authentication with your own identity provider through OAuth 2.0.
- Guardrails to moderate inputs/outputs and avoid prompt injections.
- SOC 2 Type II compliant.



We created Globant > **Enterprise AI** to offer:

- Flexibility to explore different models
- Security through personalized authentication
- **Accelerated integrations with enterprise systems**
- **Observability over costs and interactions**

While building solid enterprise AI solutions that are future-proof and resilient to changes.



Let's Go

Globant ▶

Enterprise AI

Console



Assistants

Globant>
Enterprise AI

プロジェクトのオプション

🏠

ダッシュボード

☰

アシスタント

🔍

RAG アシスタント

📁

プロンプトファイル

🕒

リクエスト

🔑

API トークン

🔒

秘密

👤

メンバー

👥

ロール

💬

プレイグラウンド

🧪

研究室

組織のオプション

アシスタント

プロジェクトDefault (Fabian Bonilla)

独自のアシスタントを作成

コード生成などのビジネス ユース ケースに関連するタスク向けのアシスタントを設計

CHAT ASSISTANT を作成API ASSISTANT を作成CHAT WITH DATA ASSISTANT を作成

マイアシスタント

アシスタント名次を含むステータス有効▼

名前	タイプ ↑	最終更新				
DescriptionsAssistant	TextPrompt	25/05/24 14:38	更新	削除	設定	リビジョン

1 / 1 ページ

ステータスでフィルタリング<< < > >>

Unlock new experiences with Gen-AI

- **Create your private Chat-GPT:**

Connect to any LLM and enjoy a Chat-GPT-like experience making sure your data and queries stay in-company.

- **Create customized images**

Use natural language to tailor visual content to your specific preferences, needs, or contexts in seconds.

- **Extract information from images**

Analyze visual data and recognize patterns, text, or objects within images with great precision, reducing the time and effort required for manual data extraction.

Unlock new experiences with Gen-AI

- Chat with your documents

Summarize or quickly extract insights from lengthy documents, saving time and increasing efficiency.

- Chat with your corporate data

Efficiently retrieve information using natural language and enhance accessibility, eliminating the need for complex queries or navigation through traditional interfaces.

- Chat with APIs using natural language

Make it easier for a broader audience to utilize APIs without requiring in-depth technical knowledge.

- Data Analyst

Leverage advanced data analysis to easily gain valuable insights by seamlessly interacting with complex datasets and posing sophisticated queries.

Chat with data

Globant ▶

Enterprise AI

The background is a dark, textured composition. It features several large, flowing, organic shapes in shades of teal and a muted yellow-green. A prominent, bright white and light blue particle trail or smoke-like effect curves from the upper right towards the center, creating a sense of movement. The overall aesthetic is ethereal and digital.

Demo

API

エンタープライズAI

目次

概要

API リファレンス

[チャット API](#)

[Responses API](#)

[LLM API](#)

[組織 API](#)

[RAG Assistants API](#)

[Rerank API](#)

[埋め込み API](#)

[omni-parser API](#)

[アシスタント API](#)

[ファイル API](#)

[Images API](#)

[使用制限 API](#)

[フィードバック API](#)

» [評価 API](#)

🌐 [日本語](#) ▾

ページツール ▾

ページ情報 ▾ ⓘ

最近のアクセス : [RAG Assistants API](#) [エンタープライズAI](#)

Globant Enterprise AI API リファレンス

Globant Enterprise AIは、さまざまなAPIを提供しています。一方では、大規模言語モデル（LLM）システムとの統合を可能にし、プラットフォームのメタデータを変更するアクションを実行します。もう一方では、定義されたアシスタントとの対話を可能にする別のAPIセットを提供します。

利用可能なAPI

- [チャット API](#)
- [Responses API](#)
- [LLM API](#)
- [組織 API](#)
- [RAG Assistants API](#)
- [Rerank API](#)
- [埋め込み API](#)
- [omni-parser API](#)
- [アシスタント API](#)
- [ファイル API](#)
- [Images API](#)



質問してください

Assistants



Chat with LLM



Chat with Data



Chat with
Documents (RAG)



Chat with APIs





There is much more ...

Globant ▶

Enterprise AI

Assistants & Agents

Globant ▶

Enterprise AI



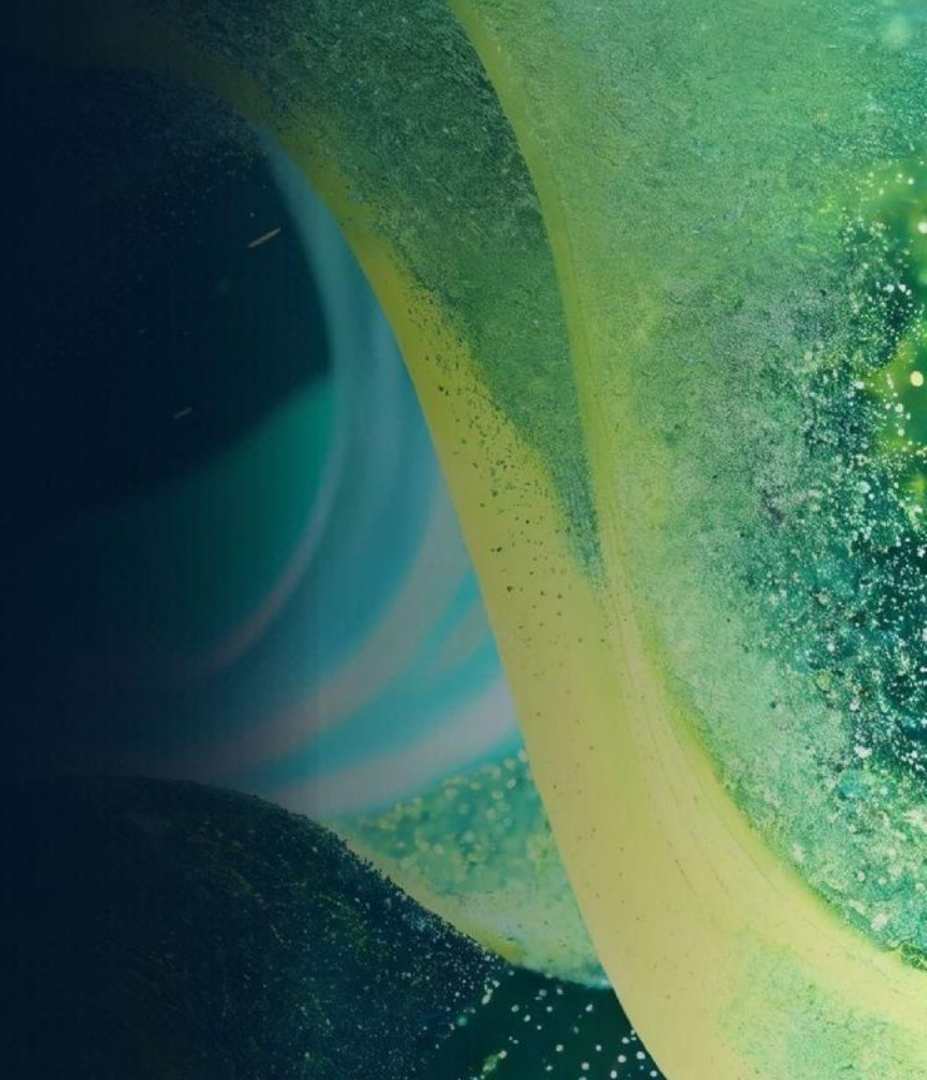
Assistant

- Reactive
- Handle routine & repetitive tasks
- Wait for instructions
- Conversational AI
- Need **prompts**



Agents

- Proactive
- Address complex problems
- Acts autonomously
- Decision making & Action
- Need **goals**



Capabilities

What an Agentic AI System can do.



Perception



Tool Use



Reasoning & Planning



Learning & Adaptability



**Memory & Knowledge
Management**



Communication

The Lab

Globant ▶

Enterprise AI

New The Lab

Define, manage, and orchestrate autonomous AI agents.

It provides a standardized model for representing agents, their capabilities, and their interactions within complex workflows. The core components of **The Lab** include:

Agents & Tools

This module allows for the definition and management of individual agents and their resources, such as skills and tools. It serves as a central hub for cataloging and managing the agent workforce.

Agentic Processes

This component enables the definition of processes based on tasks executed by Agents. These workflows facilitate collaboration among agents to achieve larger objectives.

Agent RunTime

This module provides the execution environment for agentic workflows, where agents perform tasks based on their skills and interact with artifacts, driven by events and the flow of knowledge.



Demo

Agentic processes

Globant ▶

Enterprise AI

The background is a dark, textured composition. It features several large, flowing, organic shapes in shades of teal and yellow-green. A prominent, bright, wavy line of light yellow-green runs diagonally from the upper right towards the center. Another teal-colored wavy shape is visible on the right side. The entire scene is filled with a fine, grainy texture and a trail of small, bright white and yellow particles, suggesting a sense of motion or a digital particle system.

Demo

Globant ► Enterprise AI

The platform for reliable and scalable AI



What makes GEAI really robust is how it empowers every business role!

Citizen Developers

Can build Agents and Agentic Processes quickly and securely without any programming.

Builders

They can deeply customize and integrate AI using external APIs, SDKs, and frameworks.

Admins

They govern, outline, and ensure regulatory and technical compliance.

Success cases

Globant ▶

Enterprise AI

Transforming Organon's Medical Content with Generative AI

Discover how the company's content workflows were revolutionized with an Agentic AI approach.



Problem

- Complex and **fragmented workflows** in content creation led to **extended timelines and inefficient processes**.
- Disjointed communication and **manual handoffs** resulted in slow, **labor-intensive content development**, creating missed opportunities for impactful medical communication that could effectively reach healthcare professionals.



Solution

We envisioned a specialized, integrated **AI agentic workflow** powered by **Globant Enterprise AI**, featuring multiple AI Agents that collaborate to streamline medical content creation, including a Medical Researcher, Content Creator, and Compliance Specialist agents.

This AI-driven workflow ensures a **seamless, cumulative intelligence approach** where each Agent's output becomes the input for the next, resulting in a **dynamic and interconnected content creation process**.

Exploring AI-Driven Software Development in the banking industry

Discover how we leveraged AI to modernize the legacy system of a leading bank.



Problem

The bank's core system was deeply embedded in the mainframe environment and built on COBOL/DB2. The increased reliance on these **outdated technologies posed a significant risk**, as the days of COBOL were numbered amidst the transition to modern languages.

Also, the **escalating cost** of maintaining this system became a growing concern.



Solution

Using Globant Enterprise AI, we re-architected and optimized over 11,600 lines of COBOL. We implemented advanced automation and reengineering techniques that significantly outperformed traditional methods.

Key activities: Architectural planning, setting up a test environment, selecting COBOL samples, leveraging AI Agents for documentation and code generation, and integrating these into the development pipeline.

Technology suite: Globant Enterprise AI, IDEs, CI/CD, GitHub Copilot, LLMs, and cloud services.

Improving the performance of trade managers with Gen-AI

Discover how an international trade consulting firm integrated AI to improve the efficiency and accuracy of their advisory services.



Problem

For quick answers to legal and regulatory concerns, trade managers would turn to a document base compiled by the advisory department with over 20 years worth of norms and internal reports, but the length of the document made manual searches time-consuming and unproductive.



Solution

We used Globant Enterprise AI to create an AI assistant integrated with the foreign trade regulations and reporting document base, enabling trade managers to obtain immediate and reliable answers. This assistant understands natural language queries and semantically searches documents for the best responses. This AI solution ensured **faster implementation, data security, and efficient processing of large volumes of documents**, while maintaining performance and allowing for seamless scalability and updates.

Enhancing User Experience on a Utility Company's Website with Gen-AI

Discover how Uruguay's main electricity company integrated AI to streamline information search for its website visitors.



Problem

Our client's electric mobility website offered helpful information to visitors but was scattered in different sections of the website, requiring a lot of navigation to find it.



Solution

Leveraging Globant Enterprise AI, we developed an advanced chatbot tailored for the electric mobility website, enabling site visitors to ask questions and immediately receive answers typically found in a FAQ section or through site navigation. Developing this AI solution with Globant Enterprise AI ensured:

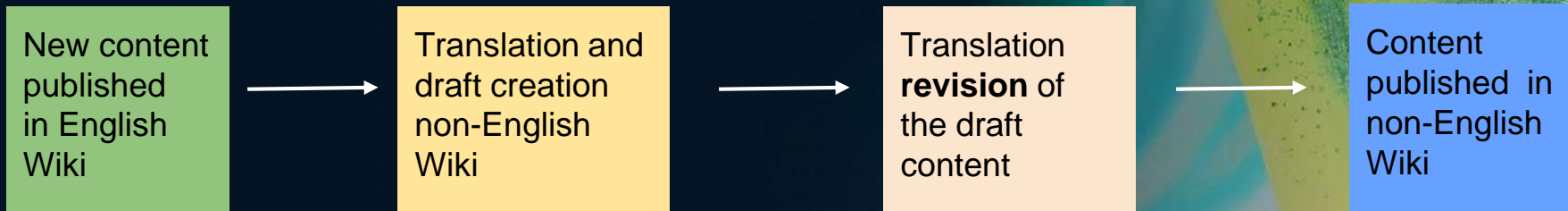
- **A significant acceleration** of implementation times.
- **Data security and privacy** in handling and processing.
- **Efficiency and accuracy** in processing vast amounts of documentation without compromising performance, allowing for seamless scalability and updates to the document base.

Dogfooding

We are also enhancing our processes and solutions using GEAI

- AI Assistants for development
- Enterprise chat application
- Training assistant
- Support agents
- AI-powered documentation translation

Multi-language documentation



Globant >
Enterprise AI

The background is a dark, textured composition. It features several large, flowing, organic shapes in shades of teal and a muted yellow-green. A prominent, bright, glowing trail of small white and light blue particles curves from the upper right towards the center, creating a sense of movement and depth. The overall aesthetic is ethereal and digital.

Demo

Roadmap

Globant ▶

Enterprise AI

Last Release

May 2025

- Support for Model Context Protocol (MCP) to integrate external tools
- New Python SDK for Globant Enterprise AI (PyGEAI)
- New /responses Endpoint for AI Interactions
- New Images API
- New omni-parser API to get the content of different file types.
- File support for Teams & Slack in Flows
- The definition and management of Flows are now fully integrated into the Lab
- New gateways for conditionals and synchronization in the agentic process
- New LLMs:
 - New Gemini 2.5 models
 - GPT-4.1 model series by OpenAI
 - Grok 3 Model Family added

Our vision

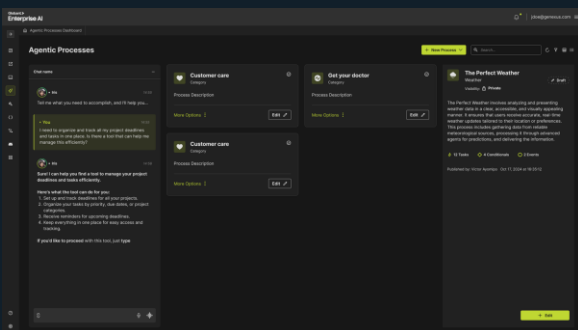


The Console for Admin users



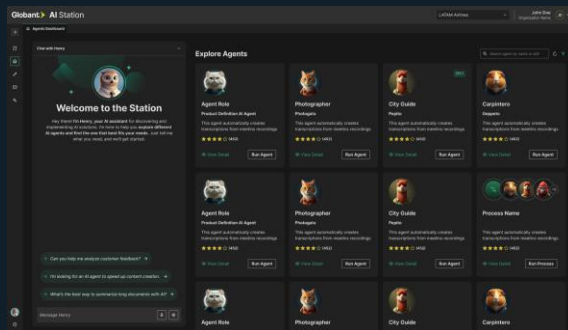
- Security administration
- Observability
- Cost management
- Configurations

The Lab for Builder users



- Agent creation
 - RAGs (docs, databases)
 - Prompting, version control
- Agentic Processes
- Chat Flows
- Tools

The Station for Consumer users



- Role based access to Agents
- Multi modal UX
- Chat with Agents and LLMs
- Sharing options
- Options to create my own agents

Roadmap 2025

Q3 2025

Q4 2025

- The Lab
 - Agentic Processes with human interactions
 - Support for MCP Tools protocol
 - Agents to chat with database and datasets
- The Station
 - AI Conversational interface
 - Station Workspace for execution
 - Admin Panel: Management and moderation.

- The Lab
 - Multi agent frameworks integration
 - More tools
- New UX for the Console
- Evaluation module backoffice
- The Station
 - Solution Maturity Stages
 - Personalization features
 - Upload capability

Q&A

Globant▶

Enterprise AI

Shape your AI journey

Globant▶

Enterprise AI